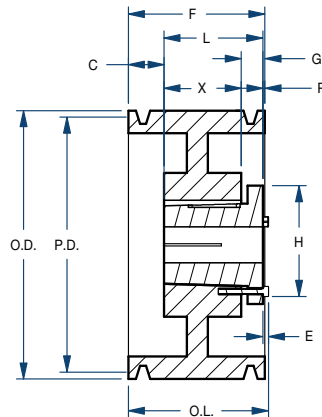


Sheaves

5TC/Split Taper



BLACKSTAR®



Type 15

Part Number		Diameters (in)		Type	Dimensions (in)									Weight less Bushing (lbs)
Sheave	Bushing	Pitch	Outside		O.L.	L	P	C	H	F	G	X	E	
5TC70	Q2	7.0	7.40	15	5-1/4	3-1/2	1/2	1-1/4	4-1/8	5-1/4	3/4	2-3/4	9/32	27.5
5TC72	Q2	7.2	7.60	15	5-1/4	3-1/2	1/2	1-1/4	4-1/8	5-1/4	3/4	2-3/4	9/32	29.8
5TC74	Q2	7.4	7.80	15	5-1/4	3-1/2	1/2	1-1/4	4-1/8	5-1/4	3/4	2-3/4	9/32	31.0
5TC76	Q2	7.6	8.00	15	5-1/4	3-1/2	1/2	1-1/4	4-1/8	5-1/4	3/4	2-3/4	9/32	34.3
5TC78	Q2	7.8	8.20	15	5-1/4	3-1/2	1/2	1-1/4	4-1/8	5-1/4	3/4	2-3/4	9/32	30.0
5TC80	Q2	8.0	8.40	15	5-1/4	3-1/2	1/2	1-1/4	4-1/8	5-1/4	3/4	2-3/4	9/32	33.4
5TC82	Q2	8.2	8.60	15	5-1/4	3-1/2	1/2	1-1/4	4-1/8	5-1/4	3/4	2-3/4	9/32	30.3
5TC84	Q2	8.4	8.80	15	5-1/4	3-1/2	1/2	1-1/4	4-1/8	5-1/4	3/4	2-3/4	9/32	32.8
5TC86	Q2	8.6	9.00	15	5-1/4	3-1/2	1/2	1-1/4	4-1/8	5-1/4	3/4	2-3/4	9/32	31.0
5TC88	Q2	8.8	9.20	15	5-1/4	3-1/2	1/2	1-1/4	4-1/8	5-1/4	3/4	2-3/4	9/32	34.9
5TC90	Q2	9.0	9.40	15	5-1/4	3-1/2	1/2	1-1/4	4-1/8	5-1/4	3/4	2-3/4	9/32	32.6
5TC92	Q2	9.2	9.60	15	5-1/4	3-1/2	1/2	1-1/4	4-1/8	5-1/4	3/4	2-3/4	9/32	36.4
5TC94	Q2	9.4	9.80	15	5-1/4	3-1/2	1/2	1-1/4	4-1/8	5-1/4	3/4	2-3/4	9/32	35.6
5TC96	Q2	9.6	10.00	15	5-1/4	3-1/2	1/2	1-1/4	4-1/8	5-1/4	3/4	2-3/4	9/32	39.1
5TC98	Q2	9.8	10.20	15	5-1/4	3-1/2	1/2	1-1/4	4-1/8	5-1/4	3/4	2-3/4	9/32	37.3
5TC100	Q2	10.0	10.40	15	5-1/4	3-1/2	1/2	1-1/4	4-1/8	5-1/4	3/4	2-3/4	9/32	42.3
5TC102	Q2	10.2	10.60	15	5-1/4	3-1/2	1/2	1-1/4	4-1/8	5-1/4	3/4	2-3/4	9/32	39.4
5TC106	Q2	10.6	11.00	15	5-1/4	3-1/2	1/2	1-1/4	4-1/8	5-1/4	3/4	2-3/4	9/32	41.0
5TC110	Q2	11.0	11.40	15	5-1/4	3-1/2	1/2	1-1/4	4-1/8	5-1/4	3/4	2-3/4	9/32	42.4
5TC114	Q2	11.4	11.80	15	5-1/4	3-1/2	1/2	1-1/4	4-1/8	5-1/4	3/4	2-3/4	9/32	42.8
5TC120	Q2	12.0	12.40	15	5-1/4	3-1/2	1/2	1-1/4	4-1/8	5-1/4	3/4	2-3/4	9/32	46.3
5TC130	Q2	13.0	13.40	15	5-1/4	3-1/2	1/2	1-1/4	4-1/8	5-1/4	3/4	2-3/4	9/32	49.5
5TC160	Q2	16.0	16.40	15	5-1/4	3-1/2	1/2	1-1/4	4-1/8	5-1/4	3/4	2-3/4	9/32	64.5
5TC200	Q2	20.0	20.40	15	5-1/4	3-1/2	1/2	1-1/4	4-1/8	5-1/4	3/4	2-3/4	9/32	78.0
5TC240	Q2	24.0	24.40	15	5-1/4	3-1/2	1/2	1-1/4	4-1/8	5-1/4	3/4	2-3/4	9/32	96.0