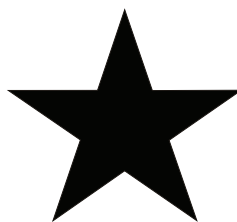
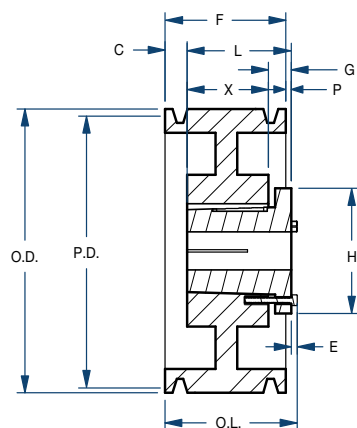


Sheaves

3TC/Split Taper



BLACKSTAR®



Type 13

Part Number		Diameters (in)		Type	Dimensions (in)									Weight less Bushing (lbs)
Sheave	Bushing	Pitch	Outside		O.L.	L	P	C	H	F	G	X	E	
3TC70	Q1	7.0	7.40	13	3-17/32	2-1/2	0	3/4	4-1/8	3-1/4	3/4	1-3/4	9/32	16.8
3TC72	Q1	7.2	7.60	13	3-17/32	2-1/2	0	3/4	4-1/8	3-1/4	3/4	1-3/4	9/32	18.0
3TC74	Q1	7.4	7.80	13	3-17/32	2-1/2	0	3/4	4-1/8	3-1/4	3/4	1-3/4	9/32	19.1
3TC76	Q1	7.6	8.00	13	3-17/32	2-1/2	0	3/4	4-1/8	3-1/4	3/4	1-3/4	9/32	21.3
3TC78	Q1	7.8	8.20	13	3-17/32	2-1/2	0	3/4	4-1/8	3-1/4	3/4	1-3/4	9/32	17.4
3TC80	Q1	8.0	8.40	13	3-17/32	2-1/2	0	3/4	4-1/8	3-1/4	3/4	1-3/4	9/32	17.8
3TC82	Q1	8.2	8.60	13	3-17/32	2-1/2	0	3/4	4-1/8	3-1/4	3/4	1-3/4	9/32	17.9
3TC84	Q1	8.4	8.80	13	3-17/32	2-1/2	0	3/4	4-1/8	3-1/4	3/4	1-3/4	9/32	20.4
3TC86	Q1	8.6	9.00	13	3-17/32	2-1/2	0	3/4	4-1/8	3-1/4	3/4	1-3/4	9/32	19.5
3TC88	Q1	8.8	9.20	13	3-17/32	2-1/2	0	3/4	4-1/8	3-1/4	3/4	1-3/4	9/32	22.5
3TC90	Q1	9.0	9.40	13	3-17/32	2-1/2	0	3/4	4-1/8	3-1/4	3/4	1-3/4	9/32	20.4
3TC92	Q1	9.2	9.60	13	3-17/32	2-1/2	0	3/4	4-1/8	3-1/4	3/4	1-3/4	9/32	22.8
3TC94	Q1	9.4	9.80	13	3-17/32	2-1/2	0	3/4	4-1/8	3-1/4	3/4	1-3/4	9/32	23.0
3TC96	Q1	9.6	10.00	13	3-17/32	2-1/2	0	3/4	4-1/8	3-1/4	3/4	1-3/4	9/32	25.3
3TC98	Q1	9.8	10.20	13	3-17/32	2-1/2	0	3/4	4-1/8	3-1/4	3/4	1-3/4	9/32	24.4
3TC100	Q1	10.0	10.40	13	3-17/32	2-1/2	0	3/4	4-1/8	3-1/4	3/4	1-3/4	9/32	27.6
3TC102	Q1	10.2	10.60	13	3-17/32	2-1/2	0	3/4	4-1/8	3-1/4	3/4	1-3/4	9/32	24.9
3TC106	Q1	10.6	11.00	13	3-17/32	2-1/2	0	3/4	4-1/8	3-1/4	3/4	1-3/4	9/32	26.9
3TC110	Q1	11.0	11.40	13	3-17/32	2-1/2	0	3/4	4-1/8	3-1/4	3/4	1-3/4	9/32	27.4
3TC114	Q1	11.4	11.80	13	3-17/32	2-1/2	0	3/4	4-1/8	3-1/4	3/4	1-3/4	9/32	28.3
3TC120	Q1	12.0	12.40	13	3-17/32	2-1/2	0	3/4	4-1/8	3-1/4	3/4	1-3/4	9/32	30.3
3TC130	Q1	13.0	13.40	13	3-17/32	2-1/2	0	3/4	4-1/8	3-1/4	3/4	1-3/4	9/32	34.9
3TC160	Q1	16.0	16.40	13	3-17/32	2-1/2	0	3/4	4-1/8	3-1/4	3/4	1-3/4	9/32	46.0
3TC200	Q1	20.0	20.40	13	3-17/32	2-1/2	0	3/4	4-1/8	3-1/4	3/4	1-3/4	9/32	54.5
3TC240	Q1	24.0	24.40	13	3-17/32	2-1/2	0	3/4	4-1/8	3-1/4	3/4	1-3/4	9/32	71.0