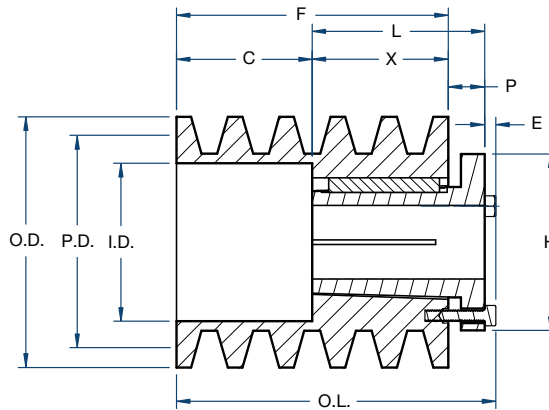
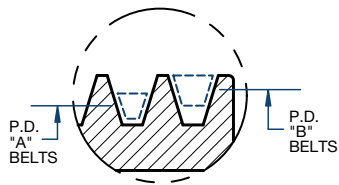


Sheaves

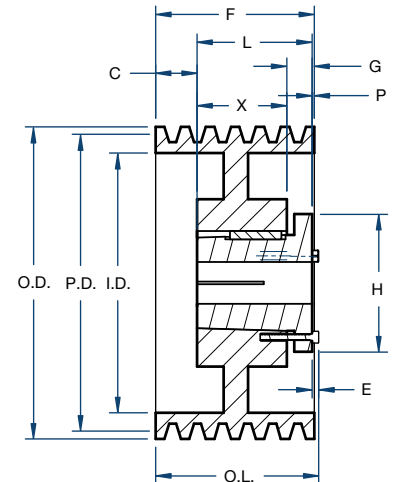
10B/SPLIT TAPER



BLACKSTAR®



Type 5



Type 15

Part Number		Diameter (in)			Type	Dimensions (in)										Weight less Bushing (lbs)
Sheave	Bushing	Pitch A	Pitch B	Outside		O.L.	L	P	C	H	F	G	X	E		
10B54Q	Q2	5.0	5.4	5.75	5	8-25/32	3-1/2	3/4	5	4-1/8	7-3/4	—	2-3/4	9/32	21.5	
10B56Q	Q2	5.2	5.6	5.95	5	8-25/32	3-1/2	3/4	5	4-1/8	7-3/4	—	2-3/4	9/32	24.9	
10B58Q	Q2	5.4	5.8	6.15	15	7-3/4	3-1/2	3-1/2	3/4	4-1/8	7-3/4	3/4	2-3/4	9/32	23.5	
10B60Q	Q2	5.6	6.0	6.35	15	7-3/4	3-1/2	3-1/2	3/4	4-1/8	7-3/4	3/4	2-3/4	9/32	25.6	
10B62Q	Q2	5.8	6.2	6.55	15	7-3/4	3-1/2	3-1/2	3/4	4-1/8	7-3/4	3/4	2-3/4	9/32	27.5	
10B64Q	Q2	6.0	6.4	6.75	15	7-3/4	3-1/2	3-1/2	3/4	4-1/8	7-3/4	3/4	2-3/4	9/32	31.4	
10B66Q	Q2	6.2	6.6	6.95	15	7-3/4	3-1/2	3-1/2	3/4	4-1/8	7-3/4	3/4	2-3/4	9/32	32.5	
10B68Q	Q2	6.4	6.8	7.15	15	7-3/4	3-1/2	3-1/2	3/4	4-1/8	7-3/4	3/4	2-3/4	9/32	36.1	
10B70R	R2	6.6	7.0	7.35	15	7-3/4	4-7/8	1	1-7/8	5-3/8	7-3/4	7/8	4	9/32	34.0	
10B74R	R2	7.0	7.4	7.75	15	7-3/4	4-7/8	1	1-7/8	5-3/8	7-3/4	7/8	4	9/32	39.9	
10B80R	R2	7.6	8.0	8.35	15	7-3/4	4-7/8	1	1-7/8	5-3/8	7-3/4	7/8	4	9/32	48.5	
10B86R	R2	8.2	8.6	8.95	15	7-3/4	4-7/8	1	1-7/8	5-3/8	7-3/4	7/8	4	9/32	51.5	
10B90R	R2	8.6	9.0	9.35	15	7-3/4	4-7/8	1	1-7/8	5-3/8	7-3/4	7/8	4	9/32	52.3	
10B94R	R2	9.0	9.4	9.75	15	7-3/4	4-7/8	1	1-7/8	5-3/8	7-3/4	7/8	4	9/32	54.0	
10B110R	R2	10.6	11.0	11.35	15	7-3/4	4-7/8	1	1-7/8	5-3/8	7-3/4	7/8	4	9/32	61.0	
10B124R	R2	12.0	12.4	12.75	15	7-3/4	4-7/8	1	1-7/8	5-3/8	7-3/4	7/8	4	9/32	77.5	
10B136R	R2	13.2	13.6	13.95	15	7-3/4	4-7/8	1	1-7/8	5-3/8	7-3/4	7/8	4	9/32	76.5	
10B154R	R2	15.0	15.4	15.75	15	7-3/4	4-7/8	1	1-7/8	5-3/8	7-3/4	7/8	4	9/32	89.0	
10B184R	R2	18.0	18.4	18.75	15	7-3/4	4-7/8	1	1-7/8	5-3/8	7-3/4	7/8	4	9/32	104.0	
10B200R	R2	19.5	20.0	20.35	15	7-3/4	4-7/8	1	1-7/8	5-3/8	7-3/4	7/8	4	9/32	112.0	
10B250R	R2	24.5	25.0	25.35	15	7-3/4	4-7/8	1	1-7/8	5-3/8	7-3/4	7/8	4	9/32	153.0	
10B300R	R2	29.5	30.0	30.35	15	7-3/4	4-7/8	1	1-7/8	5-3/8	7-3/4	7/8	4	9/32	188.0	
10B380R	R2	37.5	38.0	38.35	15	7-3/4	4-7/8	1	1-7/8	5-3/8	7-3/4	7/8	4	9/32	258.0	
10B380U	U0	37.5	38.0	38.35	15	7-3/4	4-15/16	1-7/16	1-3/8	8-3/8	7-3/4	1-3/16	3-3/4	15/32	270.0	