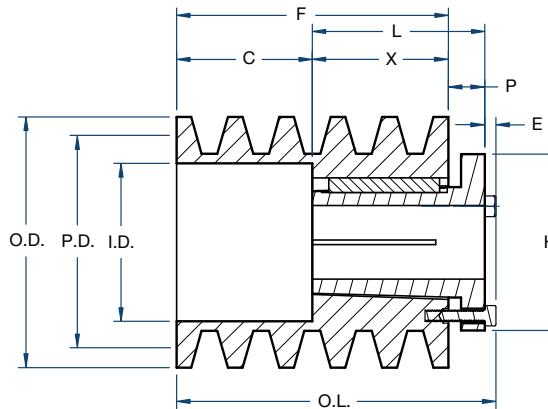
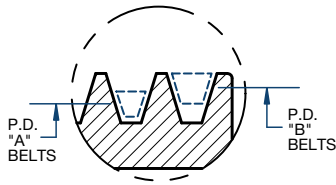


Sheaves

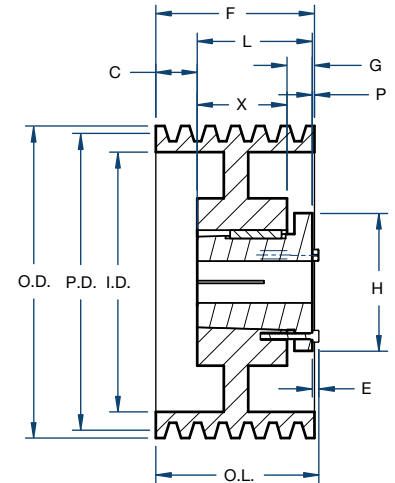
8B/SPLIT TAPER



BLACKSTAR®



Type 5



Type 15

Part Number		Diameter (in)			Type	Dimensions (in)									Weight less Bushing (lbs)
Sheave	Bushing	Pitch A	Pitch B	Outside		O.L.	L	P	C	H	F	G	X	E	
8B54Q	Q2	5.0	5.4	5.75	5	7-9/32	3-1/2	3/4	3-1/2	4-1/8	6-1/4	—	2-3/4	9/32	18.1
8B56Q	Q2	5.2	5.6	5.95	5	7-9/32	3-1/2	3/4	3-1/2	4-1/8	6-1/4	—	2-3/4	9/32	20.6
8B58Q	Q2	5.4	5.8	6.15	15	6-1/4	3-1/2	2	3/4	4-1/8	6-1/4	3/4	2-3/4	9/32	20.9
8B60Q	Q2	5.6	6.0	6.35	15	6-1/4	3-1/2	2	3/4	4-1/8	6-1/4	3/4	2-3/4	9/32	23.0
8B62Q	Q2	5.8	6.2	6.55	15	6-1/4	3-1/2	2	3/4	4-1/8	6-1/4	3/4	2-3/4	9/32	23.0
8B64Q	Q2	6.0	6.4	6.75	15	6-1/4	3-1/2	2	3/4	4-1/8	6-1/4	3/4	2-3/4	9/32	25.0
8B66Q	Q2	6.2	6.6	6.95	15	6-1/4	3-1/2	2	3/4	4-1/8	6-1/4	3/4	2-3/4	9/32	27.3
8B68Q	Q2	6.4	6.8	7.15	15	6-1/4	3-1/2	2	3/4	4-1/8	6-1/4	3/4	2-3/4	9/32	31.1
8B70R	R2	6.6	7.0	7.35	15	6-9/32	4-7/8	1/4	1-1/8	5-3/8	6-1/4	7/8	4	9/32	29.5
8B74R	R2	7.0	7.4	7.75	15	6-9/32	4-7/8	1/4	1-1/8	5-3/8	6-1/4	7/8	4	9/32	34.9
8B80R	R2	7.6	8.0	8.35	15	6-9/32	4-7/8	1/4	1-1/8	5-3/8	6-1/4	7/8	4	9/32	42.9
8B86R	R2	8.2	8.6	8.95	15	6-9/32	4-7/8	1/4	1-1/8	5-3/8	6-1/4	7/8	4	9/32	52.0
8B90R	R2	8.6	9.0	9.35	15	6-9/32	4-7/8	1/4	1-1/8	5-3/8	6-1/4	7/8	4	9/32	48.3
8B94R	R2	9.0	9.4	9.75	15	6-9/32	4-7/8	1/4	1-1/8	5-3/8	6-1/4	7/8	4	9/32	49.3
8B110R	R2	10.6	11.0	11.35	15	6-9/32	4-7/8	1/4	1-1/8	5-3/8	6-1/4	7/8	4	9/32	55.0
8B124R	R2	12.0	12.4	12.75	15	6-9/32	4-7/8	1/4	1-1/8	5-3/8	6-1/4	7/8	4	9/32	60.0
8B136R	R2	13.2	13.6	13.95	15	6-9/32	4-7/8	1/4	1-1/8	5-3/8	6-1/4	7/8	4	9/32	68.5
8B154R	R2	15.0	15.4	15.75	15	6-9/32	4-7/8	1/4	1-1/8	5-3/8	6-1/4	7/8	4	9/32	77.3
8B184R	R2	18.0	18.4	18.75	15	6-9/32	4-7/8	1/4	1-1/8	5-3/8	6-1/4	7/8	4	9/32	90.0
8B200R	R2	19.5	20.0	20.35	15	6-9/32	4-7/8	1/4	1-1/8	5-3/8	6-1/4	7/8	4	9/32	96.0
8B250R	R2	24.5	25.0	25.35	15	6-9/32	4-7/8	1/4	1-1/8	5-3/8	6-1/4	7/8	4	9/32	129.0
8B300R	R2	29.5	30.0	30.35	15	6-9/32	4-7/8	1/4	1-1/8	5-3/8	6-1/4	7/8	4	9/32	163.0
8B300S	S1	29.5	30.0	30.35	15	6-1/4	4-3/8	3/4	1-1/8	6-3/8	6-1/4	1-1/16	3-5/16	3/8	168.0
8B380R	R2	37.5	38.0	38.35	15	6-9/32	4-7/8	1/4	1-1/8	5-3/8	6-1/4	7/8	4	9/32	228.0
8B380S	S1	37.5	38.0	38.35	15	6-1/4	4-3/8	3/4	1-1/8	6-3/8	6-1/4	1-1/16	3-5/16	3/8	238.0