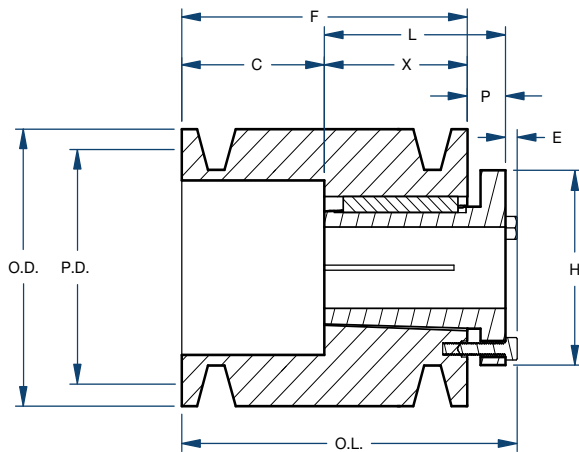
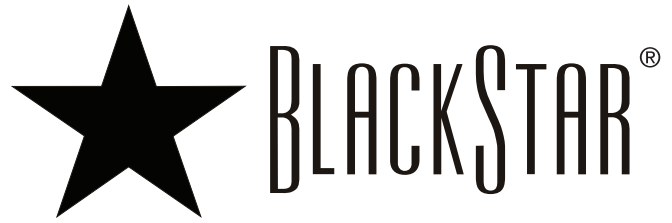
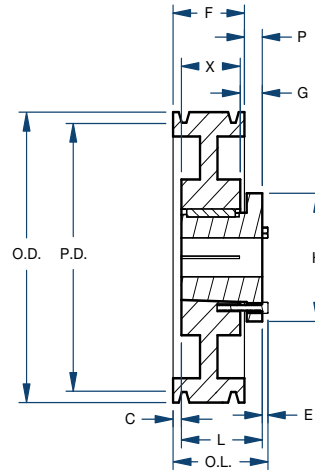


Sheaves

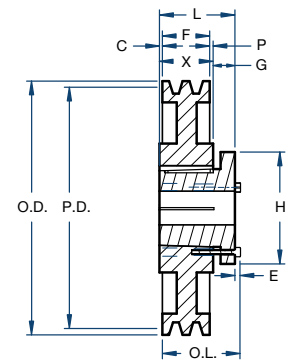
5V SERIES 2 GROOVE/SPLIT TAPER



Type 5



Type 13



Type 16

| Part Number | | Diameter (in) | | Type | Dimensions (in) | | | | | | | | | Weight less Bushing (lbs) |
|-------------|---------|---------------|---------|------|-----------------|---------|--------|--------|-------|---------|-----|--------|------|---------------------------|
| Sheave | Bushing | Pitch | Outside | | O.L. | L | P | C | H | F | G | X | E | |
| 2P5V44 | P1 | ▲4.30 | 4.40 | 13 | 2-3/16 | 1-15/16 | 1/4 | — | 3 | 1-11/16 | 5/8 | 1-5/16 | 1/4 | 3.8 |
| 2Q5V46 | Q1 | ▲4.50 | 4.60 | 5 | 3-7/8 | 2-1/2 | 3/4 | 1-3/32 | 4-1/8 | 1-11/16 | — | 1-3/4 | 9/32 | 6.6 |
| 2Q5V49 | Q1 | ▲4.80 | 4.90 | 5 | 3-5/16 | 2-1/2 | 3/4 | 17/32 | 4-1/8 | 1-11/16 | — | 1-3/4 | 9/32 | 6.2 |
| 2Q5V52 | Q1 | ▲5.10 | 5.20 | 16 | 2-25/32 | 2-1/2 | 3/4 | 1/16 | 4-1/8 | 1-11/16 | 3/4 | 1-3/4 | 9/32 | 5.6 |
| 2Q5V55 | Q1 | ▲5.40 | 5.50 | 16 | 2-25/32 | 2-1/2 | 3/4 | 1/16 | 4-1/8 | 1-11/16 | 3/4 | 1-3/4 | 9/32 | 6.6 |
| 2Q5V59 | Q1 | ▲5.80 | 5.90 | 16 | 2-25/32 | 2-1/2 | 3/4 | 1/16 | 4-1/8 | 1-11/16 | 3/4 | 1-3/4 | 9/32 | 7.6 |
| 2Q5V63 | Q1 | ▲6.20 | 6.30 | 16 | 2-25/32 | 2-1/2 | 3/4 | 1/16 | 4-1/8 | 1-11/16 | 3/4 | 1-3/4 | 9/32 | 9.4 |
| 2Q5V67 | Q1 | ▲6.60 | 6.70 | 16 | 2-25/32 | 2-1/2 | 3/4 | 1/16 | 4-1/8 | 1-11/16 | 3/4 | 1-3/4 | 9/32 | 11.0 |
| 2Q5V71 | Q1 | 7.00 | 7.10 | 16 | 2-25/32 | 2-1/2 | 25/32 | 1/32 | 4-1/8 | 1-11/16 | 3/4 | 1-3/4 | 9/32 | 12.3 |
| 2Q5V75 | Q1 | 7.40 | 7.50 | 16 | 2-25/32 | 2-1/2 | 25/32 | 1/32 | 4-1/8 | 1-11/16 | 3/4 | 1-3/4 | 9/32 | 14.1 |
| 2Q5V80 | Q1 | 7.90 | 8.00 | 16 | 2-25/32 | 2-1/2 | 25/32 | 1/32 | 4-1/8 | 1-11/16 | 3/4 | 1-3/4 | 9/32 | 11.6 |
| 2Q5V85 | Q1 | 8.40 | 8.50 | 16 | 2-25/32 | 2-1/2 | 25/32 | 1/32 | 4-1/8 | 1-11/16 | 3/4 | 1-3/4 | 9/32 | 12.9 |
| 2Q5V90 | Q1 | 8.90 | 9.00 | 16 | 2-25/32 | 2-1/2 | 25/32 | 1/32 | 4-1/8 | 1-11/16 | 3/4 | 1-3/4 | 9/32 | 16.3 |
| 2Q5V92 | Q1 | 9.15 | 9.25 | 16 | 2-25/32 | 2-1/2 | 25/32 | 1/32 | 4-1/8 | 1-11/16 | 3/4 | 1-3/4 | 9/32 | 15.1 |
| 2Q5V97 | Q1 | 9.65 | 9.75 | 16 | 2-25/32 | 2-1/2 | 25/32 | 1/32 | 4-1/8 | 1-11/16 | 3/4 | 1-3/4 | 9/32 | 16.1 |
| 2Q5V103 | Q1 | 10.20 | 10.30 | 16 | 2-25/32 | 2-1/2 | 25/32 | 1/32 | 4-1/8 | 1-11/16 | 3/4 | 1-3/4 | 9/32 | 18.8 |
| 2Q5V109 | Q1 | 10.80 | 10.90 | 16 | 2-25/32 | 2-1/2 | 25/32 | 1/32 | 4-1/8 | 1-11/16 | 3/4 | 1-3/4 | 9/32 | 19.3 |
| 2Q5V118 | Q1 | 11.70 | 11.80 | 16 | 2-25/32 | 2-1/2 | 25/32 | 1/32 | 4-1/8 | 1-11/16 | 3/4 | 1-3/4 | 9/32 | 21.4 |
| 2Q5V125 | Q1 | 12.40 | 12.50 | 16 | 2-25/32 | 2-1/2 | 25/32 | 1/32 | 4-1/8 | 1-11/16 | 3/4 | 1-3/4 | 9/32 | 23.8 |
| 2Q5V132 | Q1 | 13.10 | 13.20 | 16 | 2-25/32 | 2-1/2 | 25/32 | 1/32 | 4-1/8 | 1-11/16 | 3/4 | 1-3/4 | 9/32 | 25.5 |
| 2R5V140 | R1 | 13.90 | 14.00 | 16 | 3-5/32 | 2-7/8 | 1-1/32 | 5/32 | 5-3/8 | 1-11/16 | 7/8 | 2 | 9/32 | 27.6 |
| 2R5V150 | R1 | 14.90 | 15.00 | 16 | 3-5/32 | 2-7/8 | 1-1/32 | 5/32 | 5-3/8 | 1-11/16 | 7/8 | 2 | 9/32 | 30.9 |
| 2R5V160 | R1 | 15.90 | 16.00 | 16 | 3-5/32 | 2-7/8 | 1-1/32 | 5/32 | 5-3/8 | 1-11/16 | 7/8 | 2 | 9/32 | 33.3 |
| 2R5V212 | R1 | 21.10 | 21.20 | 16 | 3-5/32 | 2-7/8 | 1-1/32 | 5/32 | 5-3/8 | 1-11/16 | 7/8 | 2 | 9/32 | 47.5 |
| 2R5V280 | R1 | 27.90 | 28.00 | 16 | 3-5/32 | 2-7/8 | 1-1/32 | 5/32 | 5-3/8 | 1-11/16 | 7/8 | 2 | 9/32 | 71.0 |

▲For use only with Raw Edge Belts