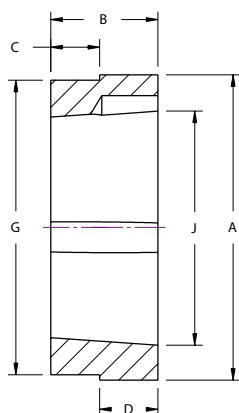
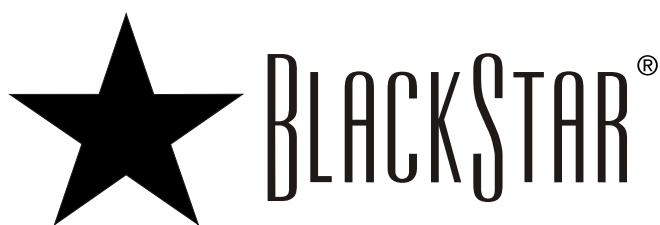
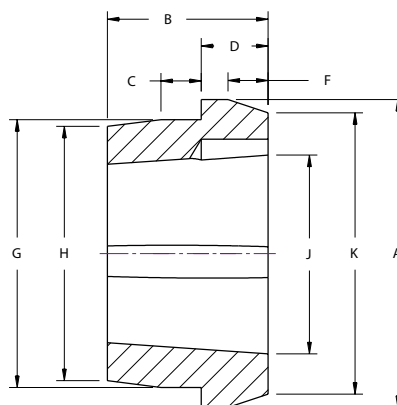


Hubs

TAPER-LOCK STYLE



Type S



Type WA

Part Number	For Use With Bushing Number	Max Bore of Bushing	Weight (lbs)	A	B	C	D	F	G	H	J	K
WA12	1215	1 1/4	1.3	2 7/8	1 1/2	3/8	5/8	3/8	2 1/2†	2 3/8	1 7/8	2 5/8
WA16	1615	1 5/8	1.5	3 1/4	1 1/2	3/8	5/8	3/8	2 7/8†	2 3/4	2 1/4	3
WA25	2517	2 1/2	4	4 7/8	1 3/4	1/2	3/4	3/8	4 3/8†	4 1/4	3 3/8	4 5/8
WA30	3030	3	8.6	5 1/2	3	3/4	3/4	1/4	5 1/8†	4 13/16	4 1/8	5
WA35	3535	3 1/2	15	6 3/4	3 1/2	1 1/4	1	3/8	6 1/4†	5 15/16	5	6
WA40	4040	4	29	7 3/4	4	1 1/2	1	3/8	7 1/4†	6 7/8	5 3/4	7
WA45	4545	4 1/2	42	8 3/4	4 1/2	1 3/4	1	3/8	8†	7 5/8	6 3/8	8
WA50	5050	5	57	9 1/2	5	1 3/4	1	3/8	8 3/4*	8 3/8	7	8 3/4
WA60	6050	6	115	13 1/4	5	1 3/4	1 1/4	-	12 1/4^	11 7/8	9 1/4	-
WA70	7060	7	155	14 1/2	6	2 1/4	1 1/4	-	13 1/2^	13 1/4	10 1/4	-
WA80	8065	8	180	15 1/4	6 1/2	2 1/4	1 1/4	-	14 1/4^	14	11 1/4	-
WA100	10085	10	340	19 3/4	8 1/2	3 1/2	1 1/2	-	18 3/4^	18 1/4	14 3/4	-

† + 0.000 / -0.002

* + 0.005 / -0.003

^ + 0.001 / -0.004

Part Number	For Use With Bushing Number	Max Bore of Bushing	Weight (lbs)	A	B*	C**	D~	G	J
S16-4	1610	1 5/8	0.9	3	1	0.275	0.725	2 7/8†	2 1/4
S16-6	1610	1 5/8	0.9	3	1	0.45	0.55	2 7/8†	2 1/4
S20-6	2012	2	1.8	3 9/16	1 1/4	0.45	0.8	3 7/16†	2 3/4
S20-8	2012	2	1.4	3 9/16	1 1/4	0.57	0.68	3 7/16†	2 3/4
S25-6	2517	2 1/2	2.6	4 1/4	1 3/4	0.45	1.3	4 1/8†	3 3/8
S25-8	2517	2 1/2	2.6	4 1/4	1 3/4	0.565	1.185	4 1/8†	3 3/8
S25-10	2517	2 1/2	2.5	4 1/4	1 3/4	0.685	1.065	4 1/8†	3 3/8
S25-16	2517	2 1/2	2.4	4 1/4	1 3/4	1.09	0.66	4 1/8†	3 3/8
S30-10	3020	3	4.3	5 1/4	2	0.675	1.325	5 1/8†	4 1/4
S30-16	3020	3	4.2	5 1/4	2	1.09	0.91	5 1/8†	4 1/4
S35	3535	3 1/2	12.8	6 1/2	3 1/2	1.16	2.34	6 3/8*	5

† + 0.000 / -0.002

* + 0.005 / -0.010

^ + 0.001 / -0.003

~ + 0.000 / -0.005

** + 0.010 / -0.010